

vtech[®]

User's Manual

Go! Go! 
Smart Animals[™]
Playtime goes wild with learning![™]

Deluxe Track Set



© 2014 VTech
Printed in China
91-002923-000  

Dear Parent,

Welcome to the world of **Go! Go! Smart Animals™**! We're excited you've decided to go on an adventure with us and explore all that **Go! Go! Smart Animals™** has to offer. These toys have been designed to give your child a thrilling learning experience with hours of fun.

Go! Go! Smart Animals™ features a collection of animals that interact with your child by lighting up and playing music and sounds while teaching your child letters and animal names*. But that's only the beginning of the learning excitement! When your child interacts with our innovative **SmartPoint™** technology, they will love hearing the animals respond to each **SmartPoint™** location on **Go! Go! Smart Animals™** and **Go! Go! Smart Wheels®** playsets* with different phrases, cheerful melodies, sing-along songs or sound effects.

Additionally, our **Go! Go! Smart Animals™** playsets include tracks that can be arranged in endless ways and can be connected to other playsets including **Go! Go! Smart Wheels®** to stimulate your child's creativity. The playsets also feature buttons, gears and other manipulative elements to encourage the development of your child's fine motor skills.

With **Go! Go! Smart Animals™**, playtime goes wild with learning!

Sincerely,
Your friends at **VTech®**

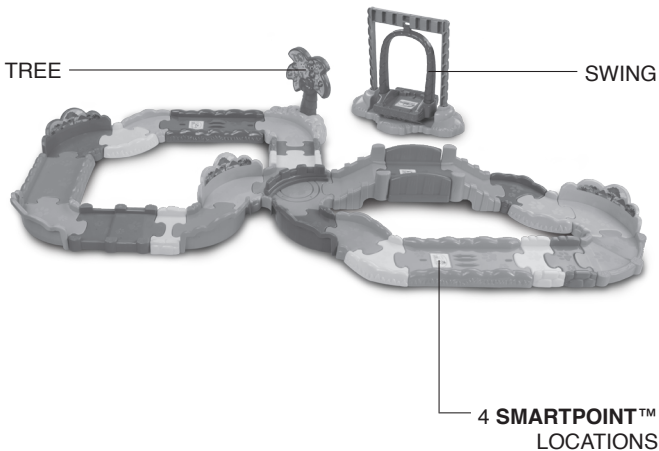
To learn more about **VTech®** toys, visit www.vtechkids.com

*Each sold separately.

INTRODUCTION

Thank you for purchasing the **VTech® Go! Go! Smart Animals™ Deluxe Track Set** learning toy!

The possibilities are endless with the **Go! Go! Smart Animals™ Deluxe Track Set** by **VTech®**. Help your child to explore their creativity and discover countless track configurations. With 27 interchangeable track pieces, a swing and two accessory pieces, your child can create an exciting animal course or connect to other playsets. Each piece is designed for little hands so your child will develop their fine motor skills while connecting the tracks and playsets to create their own **Go! Go! Smart Animals™** world. Playtime goes wild with learning!



INCLUDED IN THIS PACKAGE

- One VTech® Go! Go! Smart Animals™ Deluxe Track Set learning toy
- One user's manual

WARNING: All packing materials, such as tape, plastic sheets, packaging locks and tags are not part of this toy, and should be discarded for your child's safety.

ATTENTION : Pour la sécurité de votre enfant, débarrassez-vous de tous les produits d'emballage tels que rubans adhésifs, feuilles de plastique, attaches et étiquettes. Ils ne font pas partie du jouet.

NOTE: Please keep user's manual as it contains important information.

Includes 27 track pieces, a swing, and two accessory pieces:



One straight track



Two female connector tracks



Two **SmartPoint™** straight tracks



One **SmartPoint™** bridge

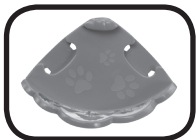
Two bridge slopes



One male connector track



Two male/female
connector tracks



Four 90 degree
tracks, female



Two 90 degree
tracks, male



One 90 degree
corner tree track



One tree
accessory

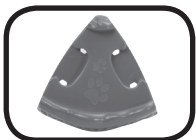


Three 60 degree
tracks, male

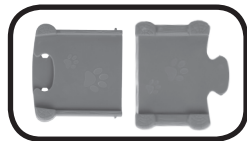


One cross track

One curved accessory
piece for the cross
track(changes direction)



Three 60 degree
tracks, female

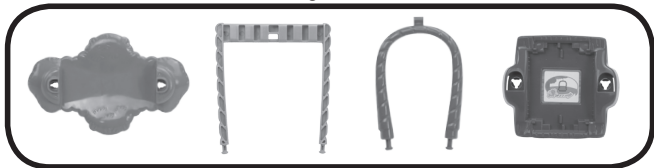


One adjustable
straight track
(two separate pieces)



One adjustable
curve track
(two separate pieces)

Swing Pieces



One swing
base

One swing
archway

One swing
bracket

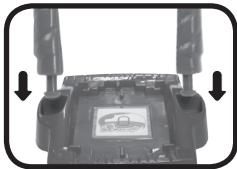
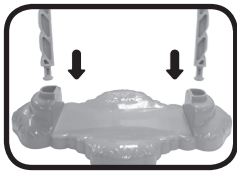
One **SmartPoint™**
swing

* **SmartPoint™** animals and vehicles respond to **SmartPoint™** locations with different phrases, music or fun sound effects. Each sold separately.

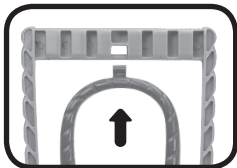
ASSEMBLY INSTRUCTIONS

With the **VTech® Go! Go! Smart Animals™ Deluxe Track Set**, safety comes first. To ensure your child's safety, adult assembly is required.

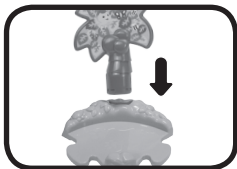
1. Attach the swing archway to the swing base. You will hear a “click” sound to indicate the pieces are secure. Once the pieces are connected, they cannot be detached.
2. Attach the swing bracket to the **SmartPoint™** swing. You will hear a “click” sound to indicate the pieces are secure. Once the swing bracket is connected to the swing, it cannot be detached.



3. Connect the assembled swing to the swing archway. You will hear a “click” sound to indicate the pieces are secure.



4. Insert the tree accessory into the corner tree track. You will hear a “click” sound to indicate the pieces are secure. Once the tree is connected to the 90 degree corner tree track, it cannot be detached.



You are now ready to play! Connect the track pieces together or you can use them to connect other **Go! Go! Smart Animals™** and **Go! Go! Smart Wheels®** playsets (each sold separately).

CARE & MAINTENANCE

1. Keep the unit clean by wiping it with a slightly damp cloth.
2. Keep the unit out of direct sunlight and away from any direct heat source.
3. Do not drop the unit on hard surfaces and do not expose the unit to moisture or water.

TROUBLESHOOTING

If you encounter any issues or problems with this product, please call our Consumer Services Department at 1-800-521-2010 in the U.S. or 1-877-352-8697 in Canada, and a service representative will be happy to help you.

For information on this product's warranty, please call **VTech®** at 1-800-521-2010 in the U.S. or 1-877-352-8697 in Canada.

IMPORTANT NOTE:

Creating and developing Infant Learning products is accompanied by a responsibility that we at **VTech®** take very seriously. We make every effort to ensure the accuracy of the information which forms the value of our products. However, errors sometimes can occur. It is important for you to know that we stand behind our products and encourage you to call our Consumer Services Department at 1-800-521-2010 in the U.S. or 1-877-352-8697 in Canada with any problems and/or suggestions that you might have. A service representative will be happy to help you.